

MEMBER LIBRARY BI-WEEKLY BULLETIN

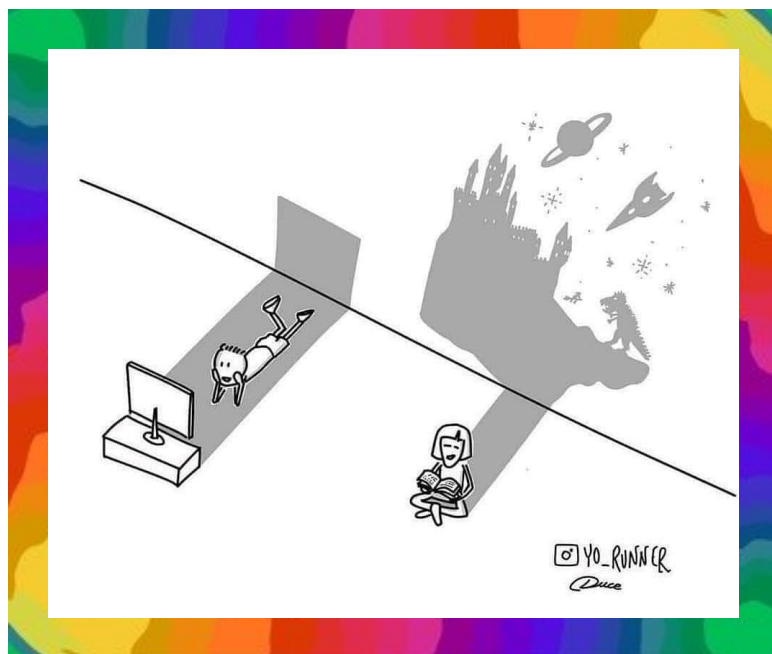
No. 23.15

Friday, September 8, 2023

TABLE OF CONTENTS

You can click on each link below to quickly navigate to your favorite bulletin sections!

- [From the Director](#)
- [Member Library News](#)
- [Continuing Education](#)
- [Programming & Outreach](#)
- [Polaris Tip](#)
- [Awards & Grants](#)



ANNOUNCEMENTS

Not sure who to contact? Visit the [Staff Directory webpage](#) and click on the *FLLS Services Contacts Cheat Sheet!*

LINKS TO MAKE YOU THINK

[Care and Consideration: Steps to improve health and wellness for library staff](#)

[Quiet Quitting Is About Bad Bosses, Not Bad Employees](#)



[988 Suicide & Crisis Lifeline Partner Toolkit](#)

[How We Fight Back](#)

[I Made the Most Banned Book in America](#)

[PLA Stronger Together: Creating Space for Mutual Support](#)

[Libraries and Toxic Leadership: Having the Conversation with Alma Ortega](#)

FROM THE DIRECTOR

The beginning of September is a transitional time at our libraries. After spending the summer months hosting many summer reading programs and celebrations, our libraries shift to increased usage by students who are returning to school, homeschooling families and groups, and teachers. We truly believe that having a library card should be part of a student's school supply list!



Library Card Sign-up Month – September is library card sign-up month and thanks to the American Library Association, there is lots of great messaging and images to use for social media posts and press releases. Libraries can find information [here](#).

TCPL HVAC Project – Our Central Library, the Tompkins County Public Library (Ithaca), will be closing for a major HVAC renovation. As a county municipal library, and a county-owned building, the project will be completed by Tompkins County. This is will be a major construction site with large equipment involved, so a total building closure is necessary.

TCPL will be closed from Friday, September 15 through Monday, October 2. The library plans to re-open on Tuesday, October 3. Up-to-date information will be placed on the library's website, www.tcpl.org. You can learn more about the project here: <https://www.tcpl.org/hvac-closure-2023>.

Here is important information for our libraries and patrons:

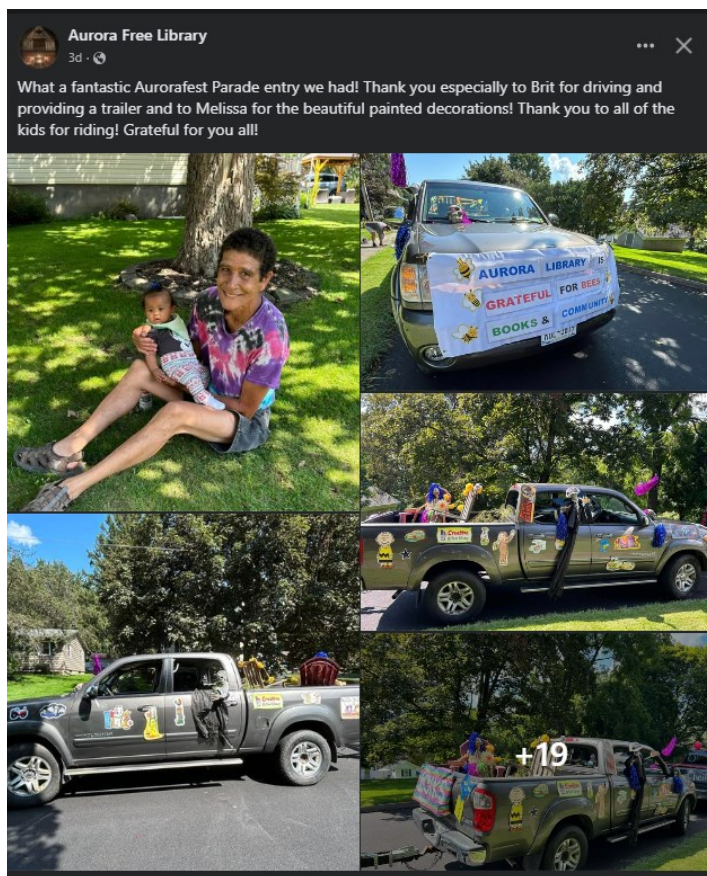
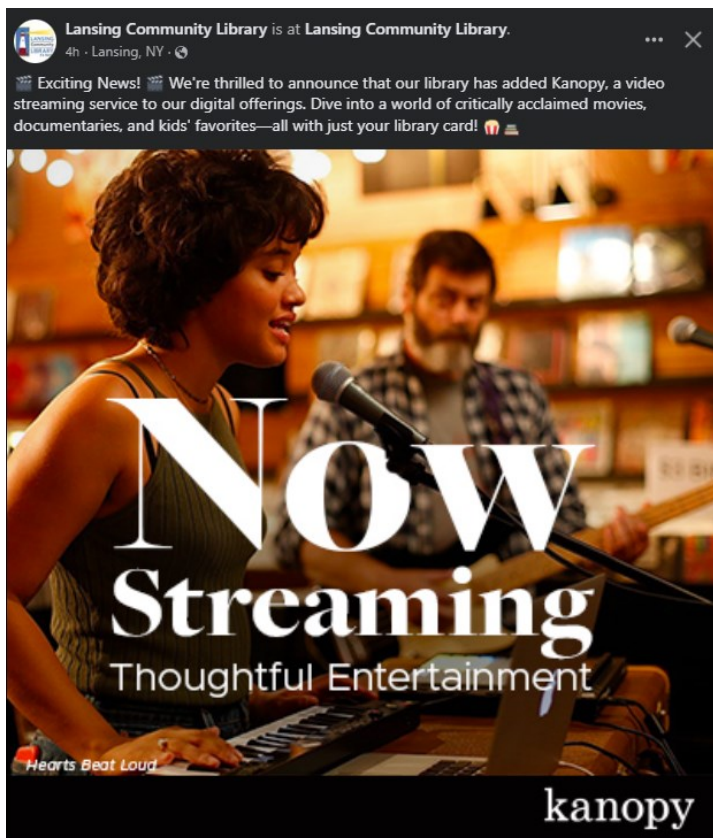
- Holds in and out of TCPL are already shut off and will restart on October 4.
- ILL due dates have been adjusted.
- Delivery from FLLS to TCPL will stop on September 15 and re-start on October 4.
- For TCPL patrons or those returning books to TCPL, book drops at TCPL are open 24/7.
- A reminder that FLLS has a book drop outside of our building at 1300 Dryden Road and all library materials from any of our libraries may be returned at this book drop 24/7.
- Libraries should return TCPL items via FLLS delivery – you are not required or expected to hold TCPL materials at your library. FLLS has room set aside in our closed, secure garage to store TCPL returns.
- FLLS will resume delivery to TCPL on October 4.
- TCPL staff will not be in the building during the closure as it is an active construction site.
- TCPL is encouraging patrons to visit member libraries throughout our system and to explore e-content and digital services.

I hope everyone has a relaxing weekend!
Sarah



MEMBER LIBRARY NEWS

Do you have something to share? Please email jshonk@flls.org!



[Back to Top](#)



CONTINUING EDUCATION

Upcoming Webinars

[Passive-Aggressive Behavior: Sources & Solutions for Library Workspaces](#) (\$49)

Wednesday, September 13, 2:00pm

Passive-aggressive behavior can be maddening. It catches us off guard, causes confusion, resentment, and low morale. What causes it and how can you help prevent it? This webinar will bring together research from multiple fields on how to handle passive-aggressive behavior, with particular tips for librarians. It will also explore the causes of passive-aggressive behavior, the benefits of anger, gender biases around anger, and more. Presented by Carrie Rogers-Whitehead.

[Bridgebuilding: Fostering Community Engagement and Dialogue](#) (WebJunction)

Thursday, September 14, 2:00pm

Bridgebuilding is an approach for promoting engagement and dialog between groups of people with different perspectives and experiences. Recognizing libraries as trusted community spaces, IREX, in collaboration with Shamichael Hallman and with support from More Perfect, created the [Bridgebuilding Resource Hub](#) to support and enhance the bridgebuilding capabilities of public libraries, to help combat rising levels of distrust and division in our communities. Learn about the free tools in the Bridgebuilding Resource Hub.

[Cultivating Antiracist, Antibias Workplaces through Cultural Competence](#) (FLLS)

Thursday, October 19, 12:00pm

Presented by Dr. Kawanna Bright. Many have seen the potential of developing cultural competence, or the ability to utilize a set of behaviors, attitudes and policies to interact effectively with people of different cultural backgrounds. Cultural competence has been suggested as an approach to combatting issues surrounding racism and bias within library and information organizations. But what does it look like in the cultivation of antiracist and antibias workplaces? This session will use the cultural competence continuum to identify specific actions or behaviors that both individuals and organizations can implement in order to develop cultural competence and combat issues of racism and bias within library workplaces.

Conferences & Special Programs



[NYLA Virtual Library Skills Academy](#)

Tuesdays from 9:30 AM - 11:00 AM
October 3, 10, 17, 24 & November 14, 21

This program is open to individuals already working or newly hired in libraries, or people interested in working in public and academic libraries. To receive a certificate, the individual must complete the entire program without missing a session.

Topics will include *Introduction to Libraries & Library Services, Reference Services, Public/ Customer Services, Technical Services, The Library & Your Community, and Outreach, Promotions, & Advocacy*. Learn more [HERE!](#)

The cost for the program is **\$180** for NYLA Members and **\$220** for NON-NYLA Members.

Registration deadline is October 1. All attendees will receive Zoom information for all sessions by close of business of October 2nd, 2023. Log-in to your NYLA account to access member pricing.

If you have any questions, contact NYLA Director of Communications & Member Engagement, C Romeo at marketing@nyla.org.

Polaris Help

To view Polaris documentation and videos from Innovative, visit the links below:

<https://vimeopro.com/innovativeiii/webinars>
<https://innovative.libguides.com/polaris>

You can also view FLLS training videos below, contact jshonk@flls.org for the password:

[Polaris New User Part 1](#)
[Polaris New User Part 2](#)
[Polaris Item Maintenance Part 1](#)
[Polaris Item Maintenance Part 2](#)
[Polaris Reporting Part 1](#)
[Polaris Reporting Part 2](#)
[Polaris Leap](#)

[Back to Top](#)



PROGRAMMING & OUTREACH

Summer Reading Survey

The Summer Reading Survey is live! Be sure to complete it no later than **Monday, September 25**. If you have questions or need the link please reach out to Heidi heckerson@flls.org.

Solar Eclipse

Watch for the email of the recording of the Solar Eclipse Kit Workshop with Ali and Annie from the Sciencenter. The kit belongs to your library and can be used for in-house programming and/or can be checked out to patrons. (We are tracking stats for the NASA Universe of Learning grant that funded the materials so please do check it out when using it.)

FLLS has three extra kits that libraries can borrow. (A20519413514; A20519413556; A20519413598). We also have some replacement items if pieces get lost or damaged.

Library Card Sign Up Month & eContent

During Library Card Sign Up Month, remind patrons that their library cards also give them access to our digital collection: <https://www.flls.org/discover-our-digital-collection/>.

How Do You Library? Share on social media for the chance to win! Post to Instagram, X, or on the Love Libraries Facebook page with the hashtag #HowLibrary. Prizes include gift cards & more. Learn more here: <https://www.ala.org/conferenceevents/celebrationweeks/card>.

What's your **LIBRARY ELEMENT?**



POLARIS TIP

Checking Out an Out-of-System Interlibrary Loan (ILL) Item

Out-of-System Interlibrary Loan items will have a different loan period than regular items. Steps 1-4 of the process below should be completed BEFORE you scan the item.

Please Note: Do not renew ILL items. If a patron would like to renew an ILL item, the member library should contact ill@flls.org to request a renewal. If the request is approved by the lender, the ILL department will update the due date. Please direct all ILL emails to ill@flls.org to ensure you receive a timely response.

1. Open the Check Out window. Scan the patron's card or locate them using the **Find** button.
2. Click on the **Special...** button in the Check Out window.
3. Locate the correct due date on the item's goldenrod colored book band. Select the due date using the calendar.

ion
2028
ryden Road
NY, NY 14850
@flls.org
9-5613
022

Loan Period
Reset Special...

Material Type Due Date

Special Loan

Enter a loan period or specify the due date:

Loan period
7

☒ Apply to next item only
☐ Apply to all items for this patron
☐ Apply to all check-outs

OK Cancel Help

July 2022

Sun	Mon	Tue	Wed	Thu	Fri	Sat
26	27	28	29	30	1	2
3	4	5	6	7	8	9
10	11	12	13	14	15	16
17	18	19	20	21	22	23
24	25	26	27	28	29	30
31	1	2	3	4	5	6

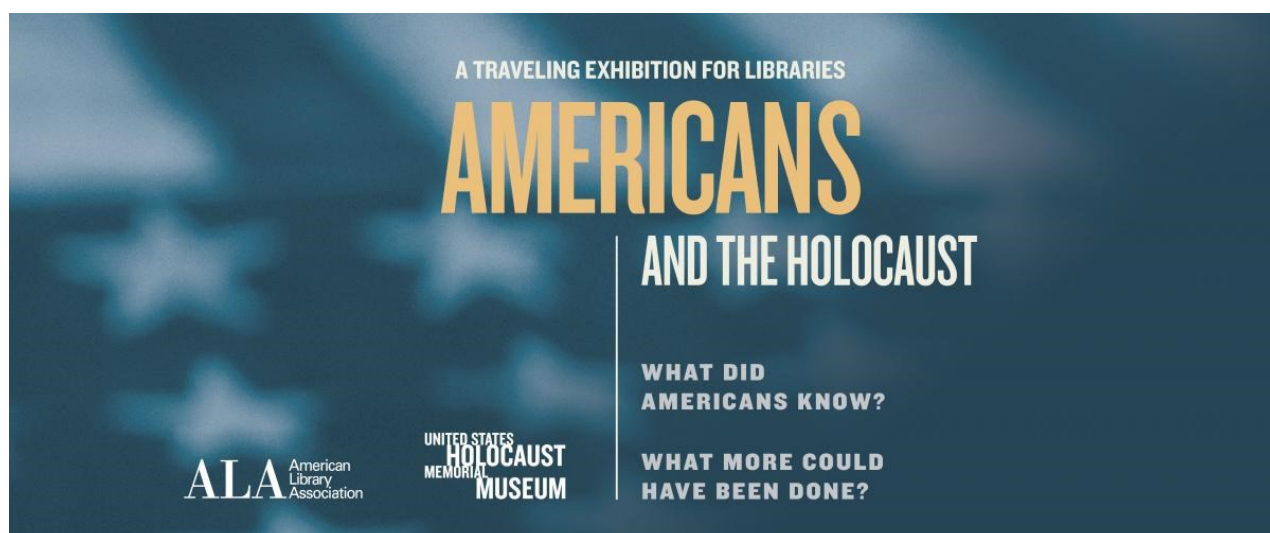
Today: 7/13/2022

4. Make sure that “*apply to next item only*” is selected and click **OK**.
5. Scan the ILL item. At this point, you may check out regular items for the patron or hit **Enter** on your keyboard to complete the transaction.

Watch a quick video: <https://vimeo.com/733707077/5c17880bd3>.



AWARDS & GRANTS



Americans and the Holocaust: A Traveling Exhibition for Libraries

Deadline: October 14, 2023

The United States Holocaust Memorial Museum (USHMM) and the American Library Association (ALA) Public Programs Office present *Americans and the Holocaust*, a traveling exhibition that examines the motives, pressures and fears that shaped Americans' responses to Nazism, war and genocide in Europe during the 1930s and 1940s. The special library exhibition — based on the exhibition at the USHMM in Washington, D.C. — travelled to 50 U.S. public and academic libraries from 2021 to 2023. The extension of the exhibition will travel to another 50 U.S. public and academic libraries from 2024 to 2026.

The *Americans and the Holocaust* traveling exhibition addresses important themes in American history, including Americans' responses to refugees, war and genocide in the 1930s and '40s. This exhibition will challenge the commonly held assumptions that Americans knew little and did nothing about the Nazi persecution and murder of Jews as the Holocaust unfolded.

Drawing on a remarkable collection of primary sources from the 1930s and '40s, the exhibition focuses on the stories of individuals and groups of Americans who took action in response to Nazism. It will challenge visitors to consider the responsibilities and obstacles faced by individuals — from President Franklin Delano Roosevelt to ordinary Americans — who made difficult choices, sought to effect change, and, in a few cases, took significant risks to help victims of Nazism even as rescue never became a government priority. The USHMM and ALA PPO hope to challenge people to not only ask “what would I have done?” but also, “what will I do?”

For more information and a link to the online application portal, ALA Apply, visit <https://www.ala.org/tools/programming/USHolocaustMuseum>.

[Back to Top](#)