

# Symantec Endpoint 14.0 RU1 MP1 Install Instructions

These instructions are for new installs of Symantec Endpoint 14.0 RU1 MP1 on computers that do not have Symantec installed or have had it removed to allow Windows Updates. If you are upgrading a computer that currently has Symantec installed, please see the Symantec Endpoint 14.0 RU1 MP1 Upgrade Instructions on the FLS website ([www.fls.org/computer-network-services](http://www.fls.org/computer-network-services)).



Figure 1



Figure 2

FLLS has distributed the current version of Symantec via flash drive. If you don't have a flash drive or have not sent it in to have new software copied to it, contact the CNS department.

If you are installing on a Public computer, make sure that to reboot the computer with Deep Freeze set to Thawed.

Install Symantec on Public computers using the Exec userid.

To install Symantec Endpoint on a computer, plug in your flash drive. If it doesn't open File Explorer automatically, open File Explorer and navigate to the flash drive.

There will be two folders, "Windows 7" and "Windows 8-10." Open the folder that corresponds to the version of Windows on the computer you're working with, the "Windows 8-10" folder the installs on both Windows 8.1 and 10.

Double-click the file "setup.exe" to launch the install.

- Click the NEXT button on the Welcome window (figure 1)
- Check the "I accept" box on the Licensing Agreement window and click NEXT (figure 2)



Figure 3

- Choose “Custom” on the Setup Type window and click NEXT (Figure 3)
- Leave “Standard Client” checked on the Installation Type window and click NEXT (figure 4)
- On the Custom Setup window click on “Network and Host Exploit Mitigation” (figure 5)
- Choose “Entire feature will be unavailable”
- Click NEXT



Figure 4

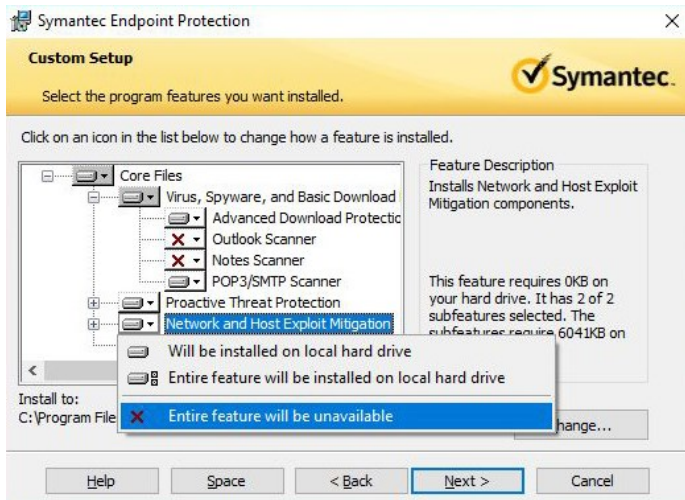


Figure 5

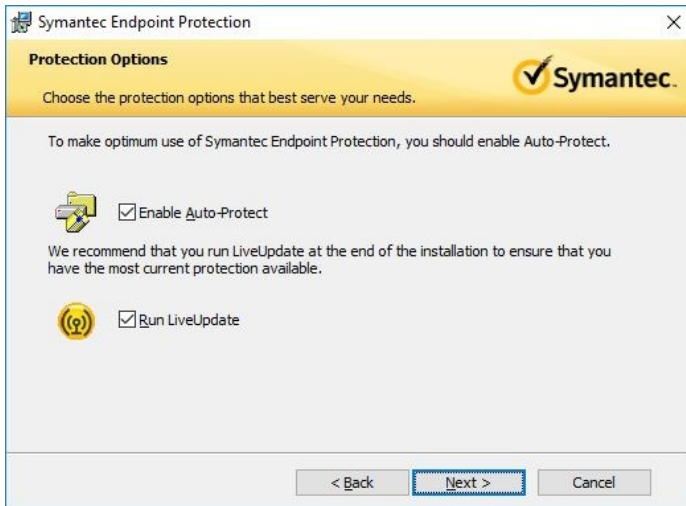


Figure 6

- Click NEXT on the Protection Options window (figure 6)
- Uncheck the “I want to join the fight...” box on the File Reputation Data Submission window (figure 7)
- Uncheck the “Yes, I’d like to help improve...” box on the Ready to Install the Program window (figure 8)

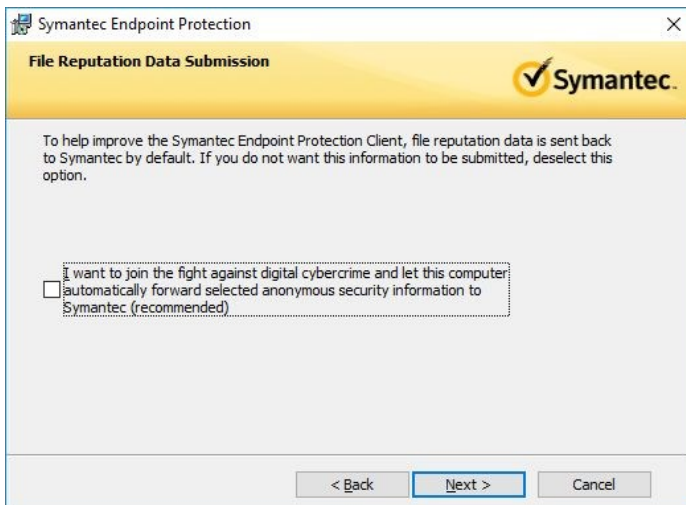


Figure 7



Figure 8



Figure 9

- Symantec Endpoint will install (figure 9)
- When the install completes, click the FINISH button (figure 10)
- LiveUpdate will run automatically (figure 11)
- When LiveUpdate completes, choose to RESTART NOW (figure 12)
- Log into EXEC after the reboot to make sure that the Symantec install has completed.
- If this is a Public computer, Deep Freeze can now be set to boot Frozen and the computer can be rebooted and put back into service. No additional reboot is needed for Staff computers.

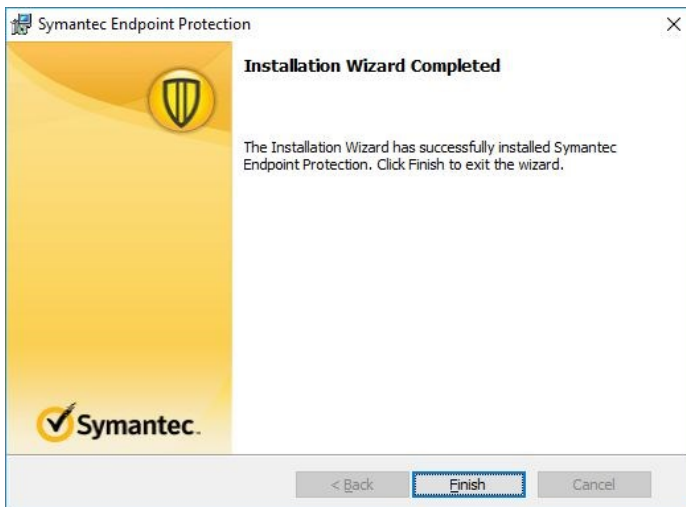


Figure 10

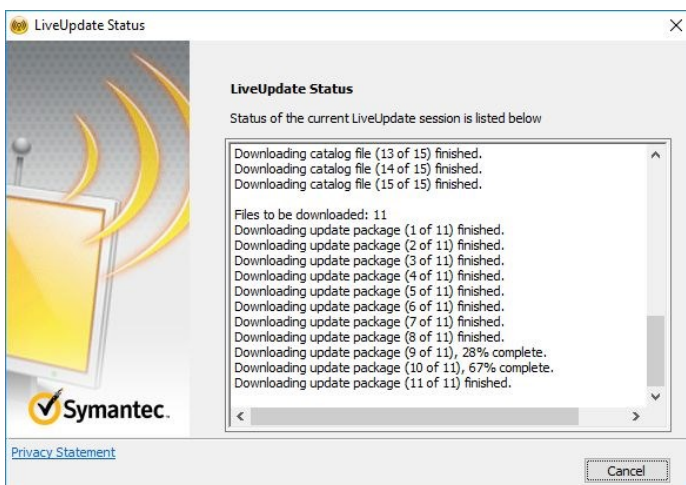


Figure 11

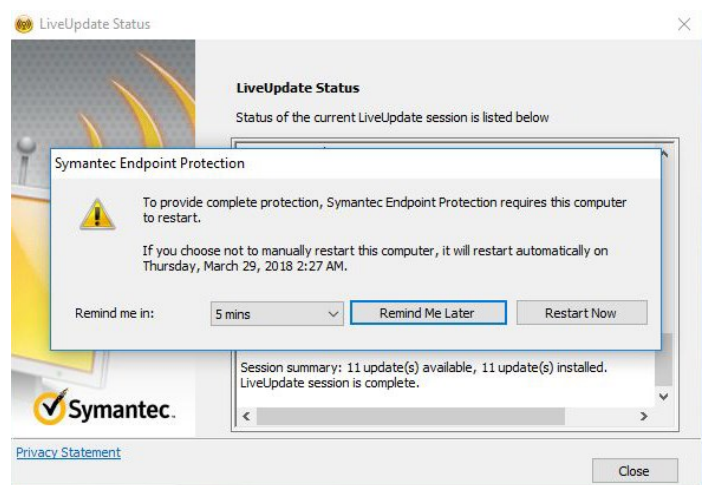


Figure 12